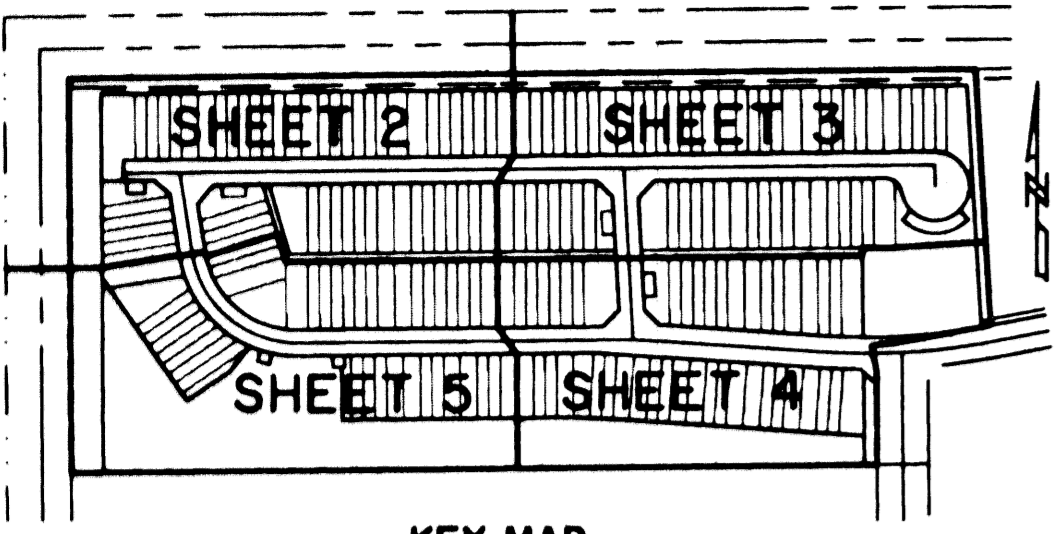


MELROSE P.U.D. "VERONA LAKES" - TRACT "B-2"

0255012

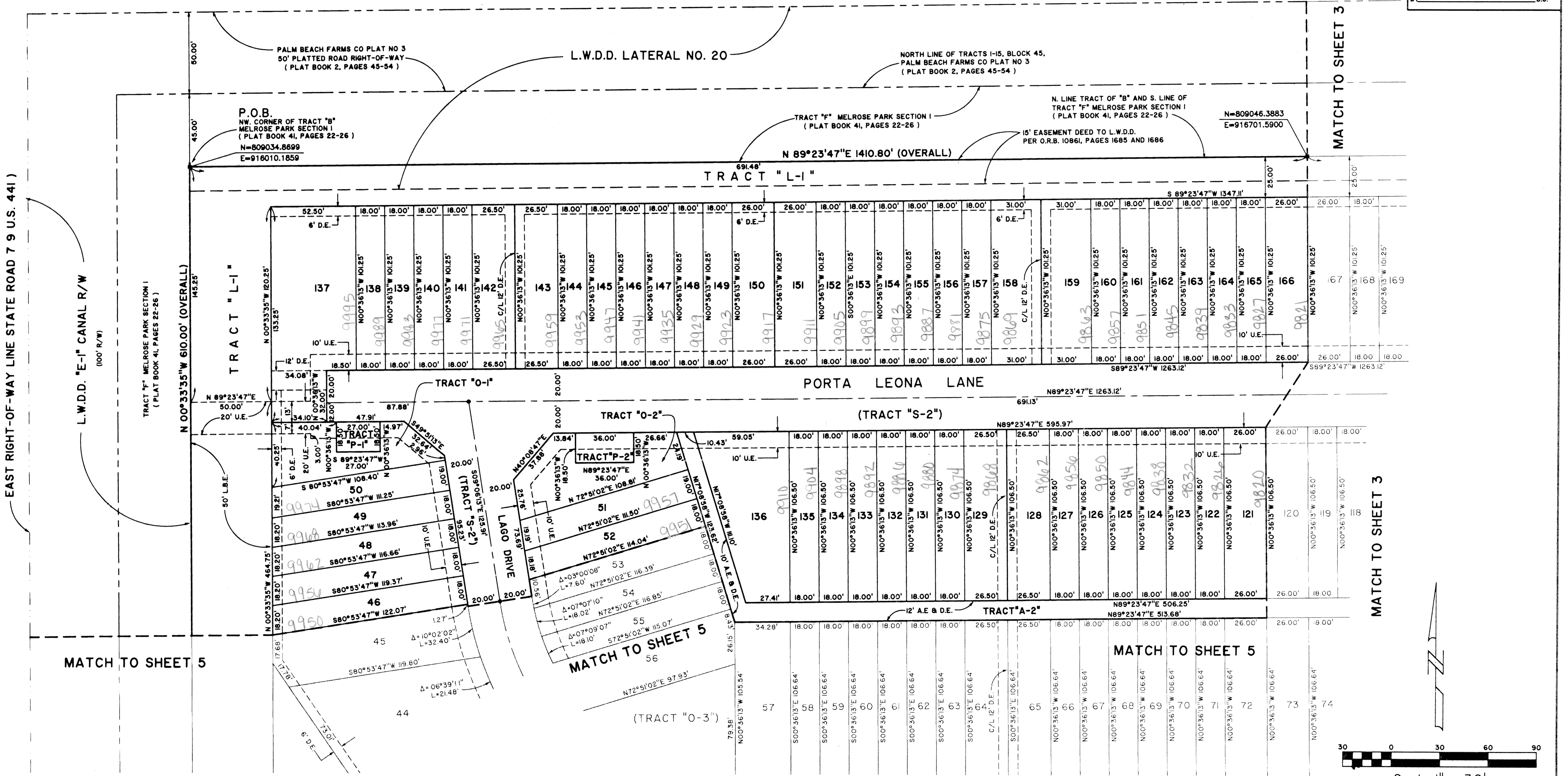
13

A PORTION OF A PLANNED UNIT DEVELOPMENT
 LYING IN SECTION 18, TOWNSHIP 45 SOUTH, RANGE 42 EAST,
 BEING THE REPLAT OF A PORTION OF TRACT "B", MELROSE PARK SECTION I,
 IN PLAT BOOK 41, PAGES 22 THRU 26, PUBLIC RECORDS OF PALM BEACH COUNTY, FLORIDA.
 SHEET 2 OF 5



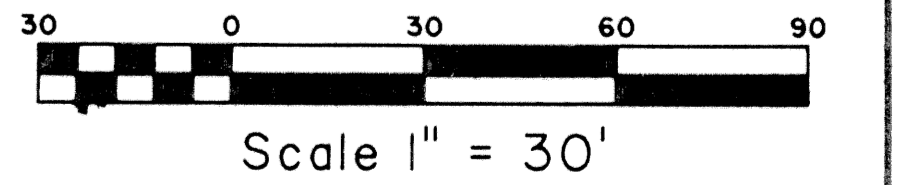
PALM BEACH FARMS COMPANY PLAT NO. 3
 (PLAT BOOK 2, PAGES 45-54)

STATE OF FLORIDA SS
 COUNTY OF PALM BEACH
 THIS PLAT WAS FILED FOR RECORD AT _____
 M. THIS _____ DAY OF _____ 2001
 AND DULY RECORDED IN PLAT BOOK NO. _____
 ON PAGE _____
 DOROTHY H. WILKEN,
 CLERK OF THE CIRCUIT COURT
 BY _____ D.C.



EAST RIGHT-OF-WAY LINE STATE ROAD 79 U.S. 441)

COORDINATE NOTE:
 STATE PLANE COORDINATES SHOWN ARE GRID DATUM, NAD 83 1990
 ADJUSTMENT, FLORIDA EAST ZONE, COORDINATE SYSTEM 1983 STATE
 PLANE, TRANSVERSE MERCATOR PROJECTION
 LINEAR UNIT - US SURVEY FEET
 ALL DISTANCES ARE GROUND
 SCALE FACTOR = 1.0000216
 GROUND DISTANCE X SCALE FACTOR = GRID DISTANCE
 N 89°23'47"E (PLAT BEARING) 00°21'03" COUNTERCLOCKWISE ROTATION
 N 89°02'44"E (GRID BEARING) PLAT TO GRID
 THE NORTH LINE OF TRACT "B", MELROSE PARK SECTION I



Landmark Surveying & Mapping Inc.
 1850 Forest Hill Boulevard
 Ph. (561) 433-5405 Suite 100 W.P.B. Florida
 LB # 4396

MELROSE P.U.D. "VERONA LAKES" - TRACT "B-2"